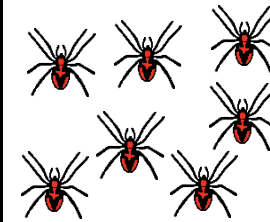


8

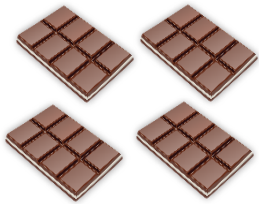
80

48



32

72



Player 1	
1×8	7×8
2×8	8×8
3×8	9×8
4×8	10×8
5×8	11×8
6×8	12×8

Player 2	
1×8	7×8
2×8	8×8
3×8	9×8
4×8	10×8
5×8	11×8
6×8	12×8

88

The product of 9 and 8.

40

24

8 squared

Take turns to roll a dice and move your counter around the board. Cross out each matching multiplication as you land on it. The winner is the first to cross out all the multiplications.

8 Times Table

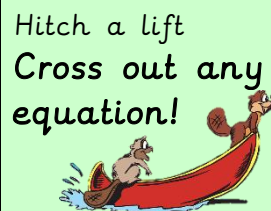
River Round-Up

www.snappymaths.com



Stuck in the swamp
Miss a go!

64



16

56



$8+8+8+8+8$

96