

one penny

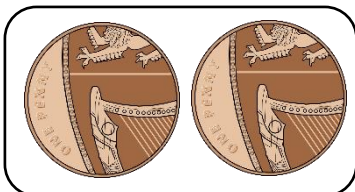


1p

two pence



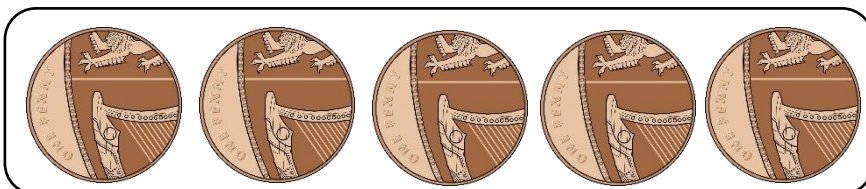
2p



five pence



5p



ten pence



10p



twenty pence



20p

20 x



fifty pence



50p

50 x



one pound



£1

100 x



two pounds



£2

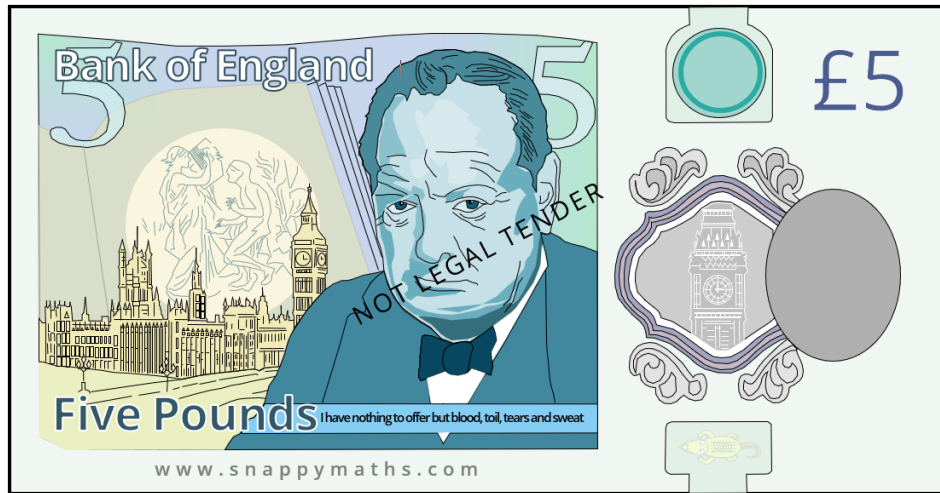
200 x



2 x



five pounds



£5



500 x 

5 x 

ten pounds

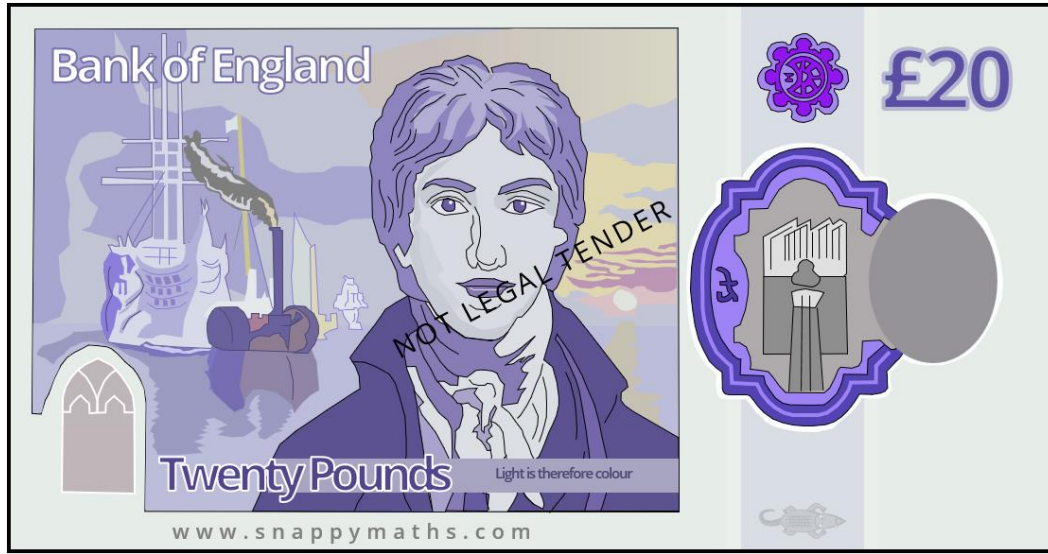


£10

1,000 x  10 x 

www.snappymaths.com

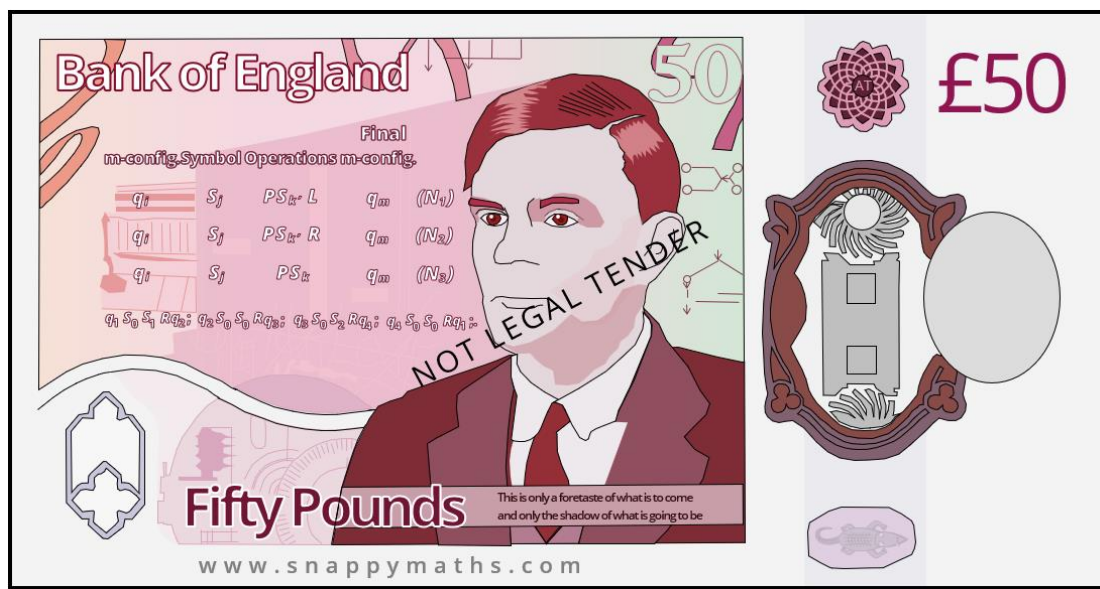
twenty pounds



£20

$$2,000 \times \text{1p} \quad 20 \times \text{1p}$$

fifty pounds



£50

$$5,000 \times \text{1p} = 50 \times \text{1p}$$